

A person in a dark hoodie and pants is walking away from the camera down a two-lane asphalt road in a desert. The road has white lane markings and a yellow dashed center line. In the distance, the road leads towards a range of dark, silhouetted buttes under a hazy, orange-tinted sky, suggesting a sunset or sunrise. The overall mood is solitary and cinematic.

Outlaw

A VFX Project by Benjamin Cook

Synopsis

World: The short story is set during a time where towns and cities are left deserted by a plague, and survivors must scour forgotten lands to find resources.

Story: The short story will follow the routine of one of the survivors.

This short film will focus on photorealism and camera skill, mainly using visual effects to assist storytelling and creating believable virtual sets.

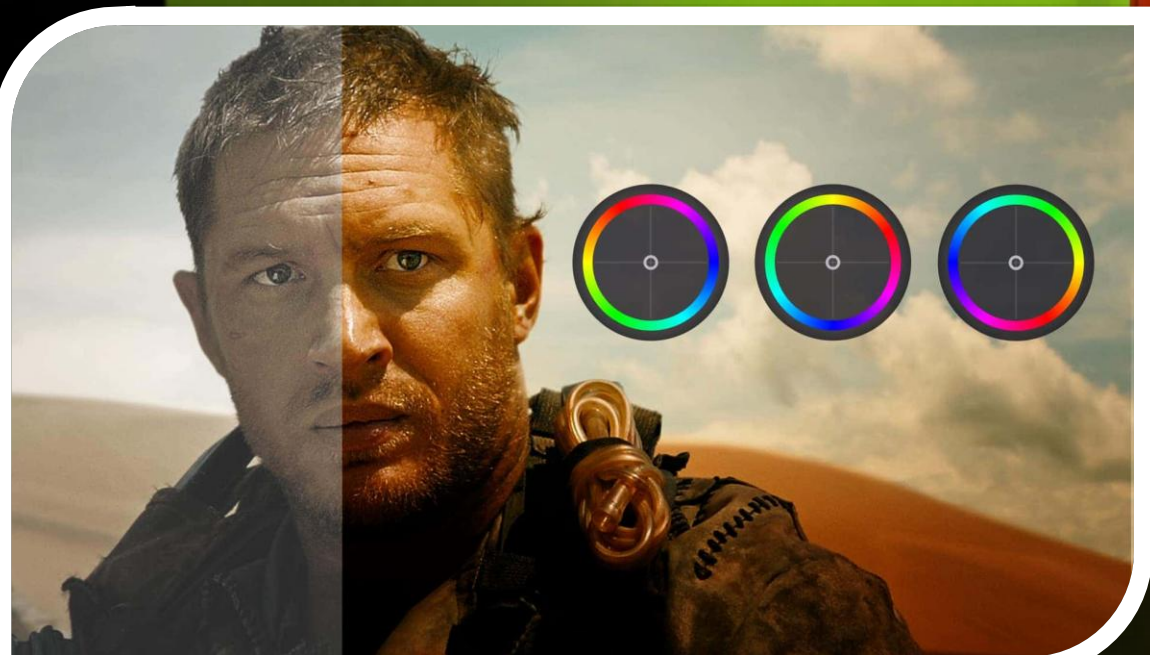


Story Mood Board





VFX Mood board



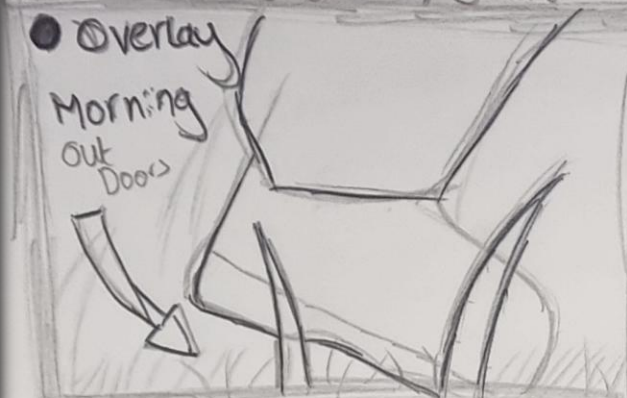
Project: Visually effects
(The Wanderer)
Seconds / Start

Rough IDEA #1

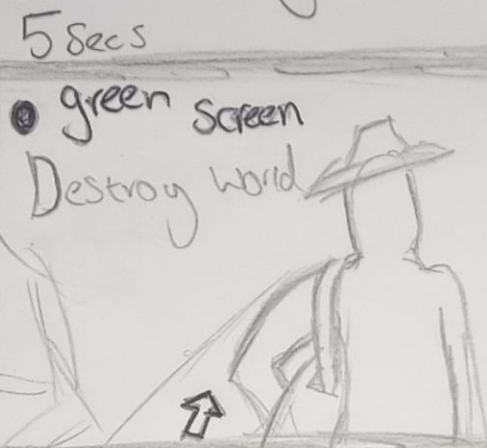
● = VFX

30 Secs

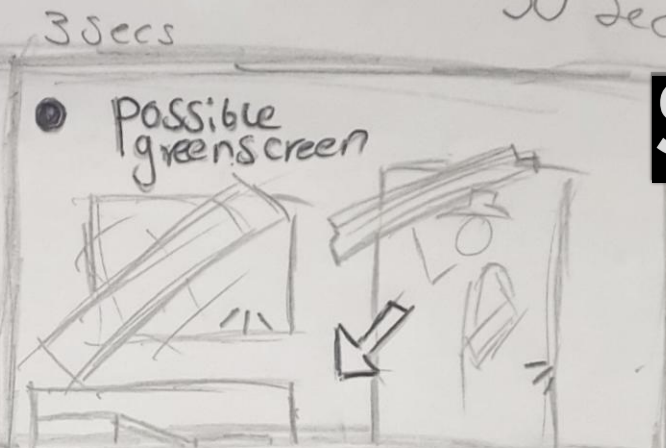
Storyboard #1



Fade in, Walking Boots
through grass.
Pos Vx: Dir on Screen



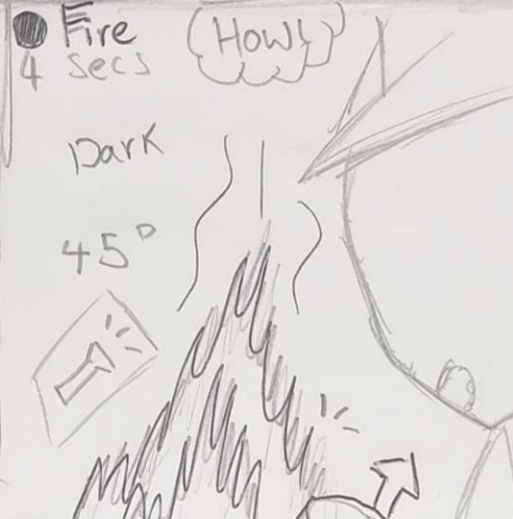
Walking, Over Shoulder,
green screen



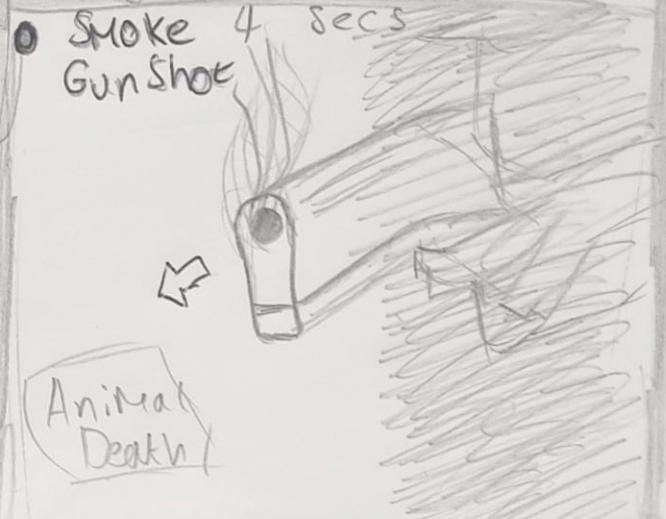
Enter Destroyed house
Pos: green screen over door/roof



Squatting Building,
Out in world After



Eating Canned
food. VFX Fire

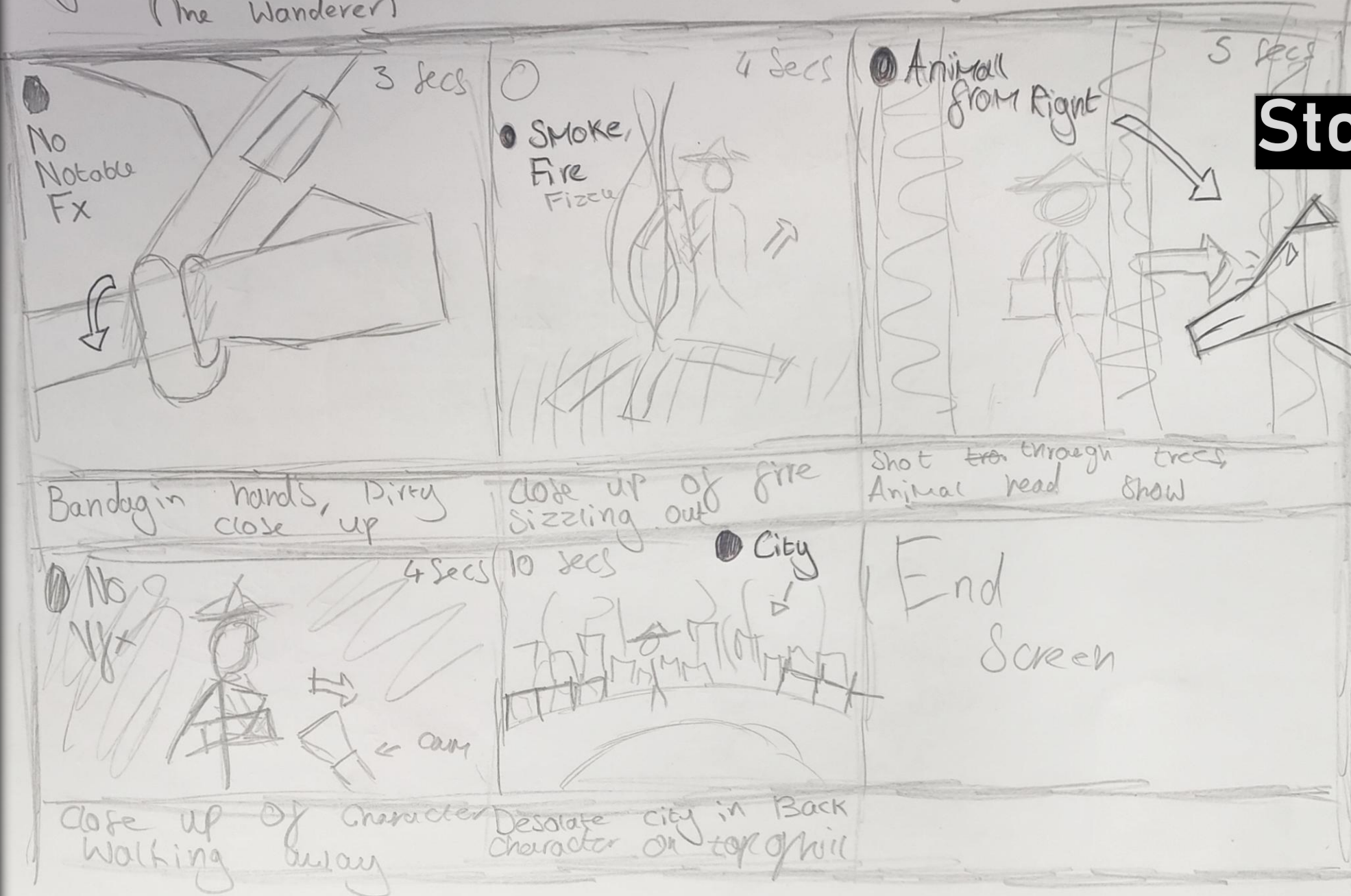


Focus on Gun
Au: gun shot, Animal cower

Project: Visual Effects Rough Idea #2
(The Wanderer)

● = Vfx

26 Secs



List Of Equipment/Software Used

Equipment

- ◊ Canon m50 Mark II Camera
- ◊ Blackmagic 4k Camera
- ◊ 2 standard Tripods
- ◊ Camera Gimbal
- ◊ Rode Mics
- ◊ Cannon Lighting Equipment
- ◊ Green Screen Studio

Software

- Adobe After Effects
- Adobe Premier Pro
- Adobe Photoshop
- Adobe Media Encoder
- Blender
- Reaper

List of VFX

- ◇ Colour Grading – Will be used to match target to the background scene.
 - ◇ FX – Will be used to create realistic flames and effects.
- ◇ Green Screen – Will be used to add an actor to a digitally created scene.
 - ◇ Rotoscoping – Will be used to add graphics or clips into a scene.
- ◇ 3D Animation – For anything impossible to film naturally, like a wolf

VFX Shot Sheet



Watch Hologram UI



Green Screen/Roto



Flame FX



Watch UI Boot

Filming Locations – Blackridge (West Lothian)



Filming Locations – Authur's seat (Edinburgh)



Why these locations?

Blackridge:

- A forest completely accessible by the public
- Few destroyed buildings contained within
- Town with little light pollution
- Quiet

Arthur's seat:

- Beautiful wide shots of the city
- Quiet
- Grassy Hills, perfect transition from Blackridge
- Great for using as background for a Green screen environment

Possible other filming locations

- ◊ Granton, Edinburgh
- ◊ Rails abandoned in Edinburgh
- ◊ Water of Leith in Edinburgh

Risk Assessment – Blackridge

RISK ASSESSMENT FORM

LOCATION: Blackridge

PROPOSED DATE OF SHOOT: 28th February



No.	Problems or hazards identified	People at risk from hazards	Preventative Measures	Action by whom
1	Outdoor Movement (Trip)	Crew	Reduce amount of equipment carried by everyone, ensure appropriate footwear is used.	Director
2	Animals	Crew	Ensure filming isn't near nests or animal dens	Director
3	Weather Exposure	Crew	Ensure clothes are appropriate for the day of filming	Director
4	Rocks	Crew	Avoid movement around sharp/rough objects	Director
5	Falling Objects	Crew	Be mindful of surroundings and avoid filming under any hillside/large tree	Director

Review Date:

21st February

Signature:

Bcook

Position:

Director

Risk Assessment - Edinburgh



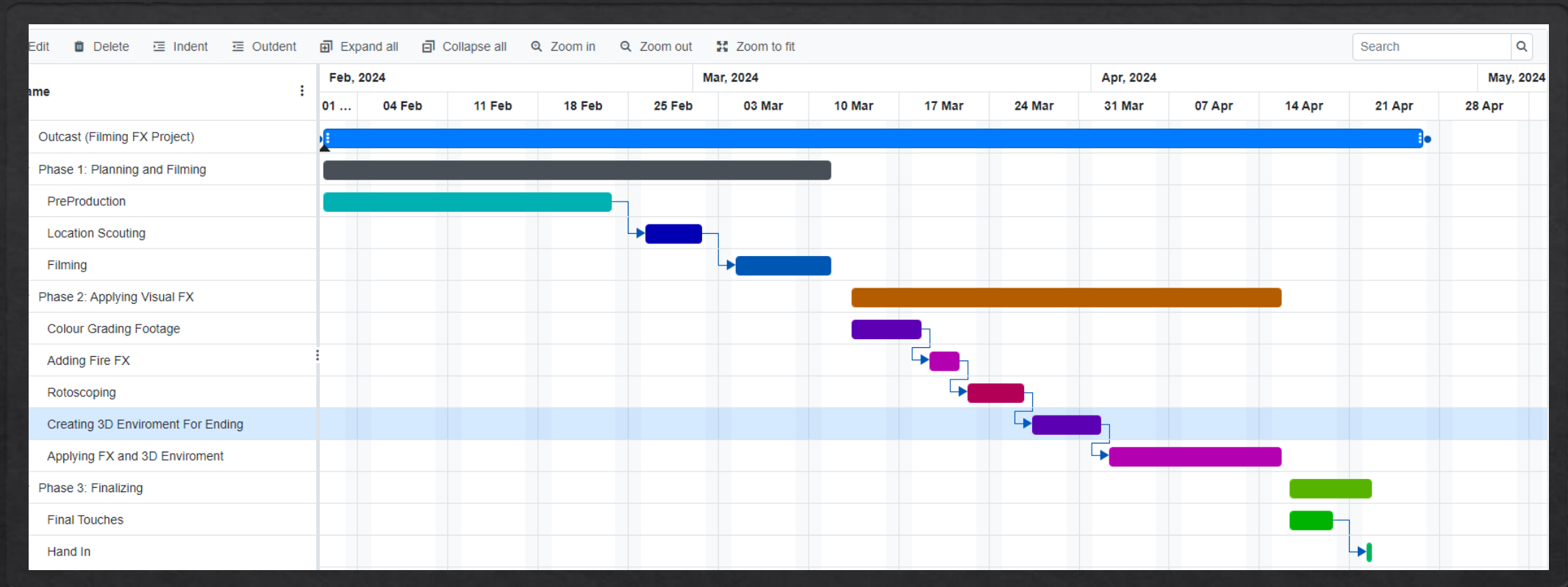
RISK ASSESSMENT FORM

LOCATION: Edinburgh

PROPOSED DATE OF SHOOT: 29th February

No.	Problems or hazards identified	People at risk from hazards	Preventative Measures	Action by whom
1	Outdoor Movement (Trip)	Crew	Reduce amount of equipment carried by everyone, ensure appropriate footwear is used.	Director
2	Animals	Crew	Ensure filming isn't near nests or animal dens	Director
3	Weather Exposure	Crew	Ensure clothes are appropriate for the day of filming	Director
4	Rocks	Crew	Avoid movement around sharp/rough objects	Director
5	Falling Objects	Crew	Be mindful of surroundings and avoid filming under any hillside/large tree	Director
6	Traffic	Crew	Only cross a pedestrian crossing's when green.	Director
7	Falling	Crew	Ensure everyone can move without issues. Insure everyone is wearing gripped shoes. Ensure everyone is holding a small amount of equipment.	Director

Review Date:	21 st February	Signature:	Bcook	Position:	Director
--------------	---------------------------	------------	-------	-----------	----------



Gantt Chart